



Leet Court | Rugeley | WS15 4TU
Offers In The Region Of £165,000

 **Webbs**
estate agents

Summary

** SOUGHT AFTER LOCATION ** ONE BEDROOM END TERRACE ** IDEAL FOR FIRST TIME BUYERS ** OPEN PLAN KITCHEN LIVING ROOM ** REAR GARDEN ** OFF ROAD PARKING ** CLOSE TO AMENITIES ** VIEWING ADVISED **

WEBBS ESTATE AGENTS are pleased to market this one bedroom, end terraced home, located in a popular area of Armitage on Leet Court. The property would be ideally suited to a first time buyer looking to get their foot on the property ladder. Located close to amenities, schools, useful transport links and much more! The internal accommodation briefly comprises, entrance porch, open plan kitchen/ living area, double bedroom and bathroom. The property also benefits from a rear garden and off road parking.

Key Features

- SOUGHT AFTER LOCATION
- IDEAL FOR FIRST TIME BUYERS
- REAR GARDEN
- CLOSE TO AMENITIES
- ONE BEDROOM END TERRACED HOME
- OPEN PLAN KITCHEN LIVING ROOM
- OFF ROAD PARKING
- VIEWING ADVISED

Rooms and Dimensions

Entry

Open Plan Kitchen/ Living Room

21'0 x 10'9 (6.40m x 3.28m)

Landing

Bedroom

11'11 x 10'9 (3.63m x 3.28m)

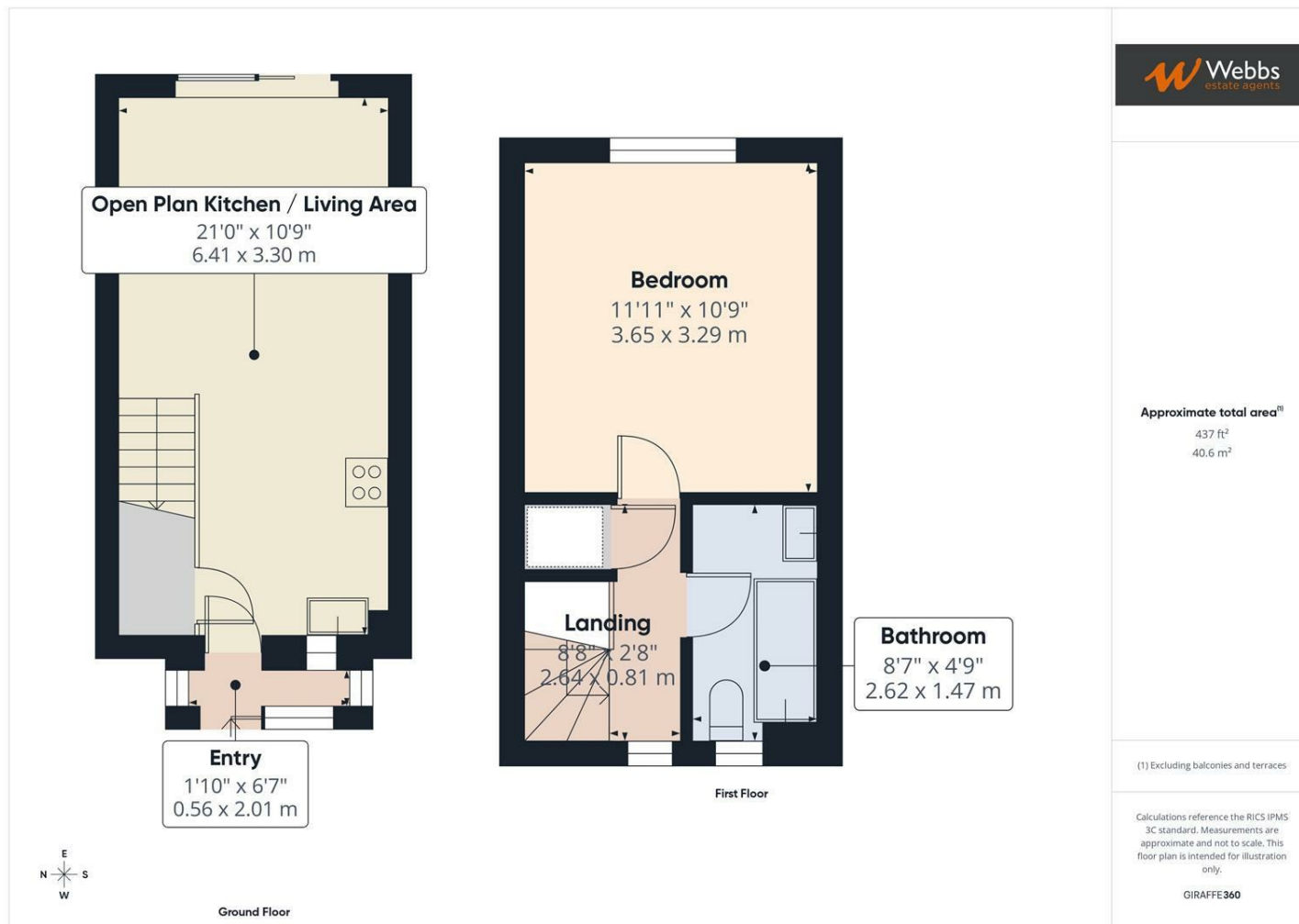
Bathroom

8'7 x 4'9 (2.62m x 1.45m)

IDENTIFICATION CHECKS (R)







Webbs Estate Agents - endeavour to maintain accurate depictions of properties in Virtual Tours, Floor Plans and descriptions, however, these are intended only as a guide and purchasers must satisfy themselves by personal inspection.

